

Forest Fairy Paper Dolls

The Daffidillio Dispatch is proud to present the Paper Doll Supplement to the article 'How To Make Fall Fairy Outfits For Your Doll', featured in the 2020 Thanksgiving Issue No. III. These adorable paper dolls were inspired by Calanthe, sewing talent fairy of Neverland, after writing her aforesaid article, and drawn by Trillia, an art talent fairy.

All five paper dolls are wonderfully done, come with two outfits each, and have a curious Japanese cartoon flavor to their style. The outfits are quite detailed, and appear to the admirer to be made of delicate petals, grasses, and fall leaves, depicting exact replicas of the everyday wardrobe of fairies. They also include such accessories as caps and sashes.

Instructions:

The paper dolls and outfits have been left without color, so that you may customize them to your individual tastes. Paper dolls and stands are best suited to be printed on cardstock, to prevent flopping and ripping; but you may print the clothing onto standard copy paper. Along the dotted lines cut slits with a box knife or craft knife for fitting the tabs of the dresses.

We hope you enjoy these special and uniquely crafted Forest Fairy Paper Dolls!

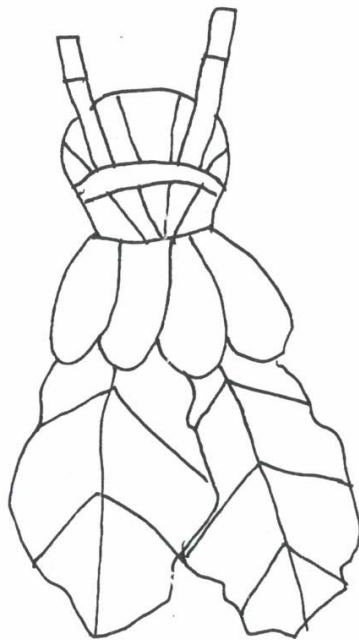
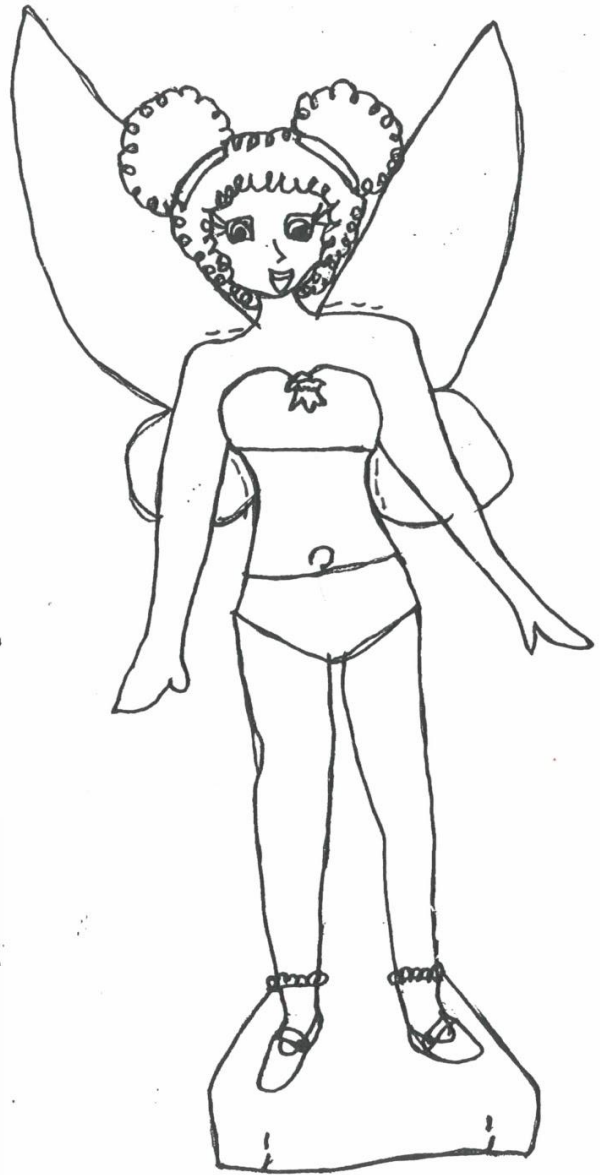
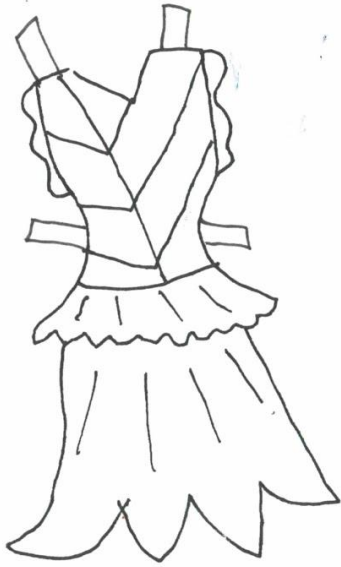
Forest Fairy Paper Dolls by Tilia R. Ronallo is licensed under CC BY-NC-ND 4.0. To view a copy of this license, visit <https://creativecommons.org/licenses/by-nc-nd/4.0>



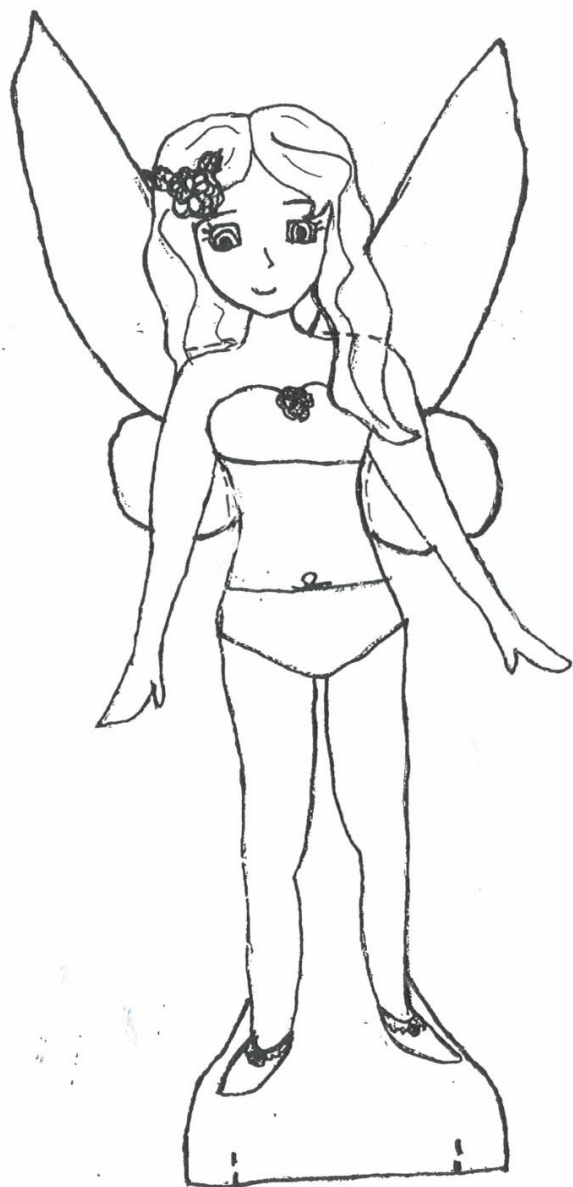


Maple

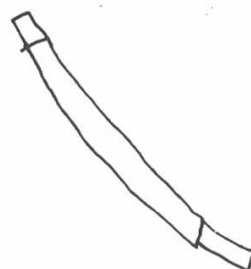
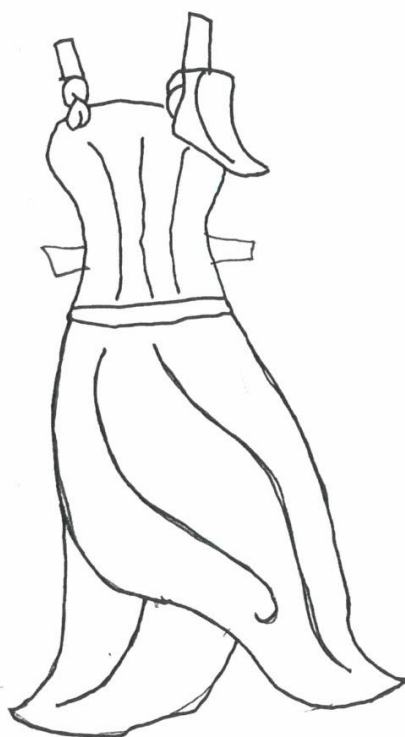


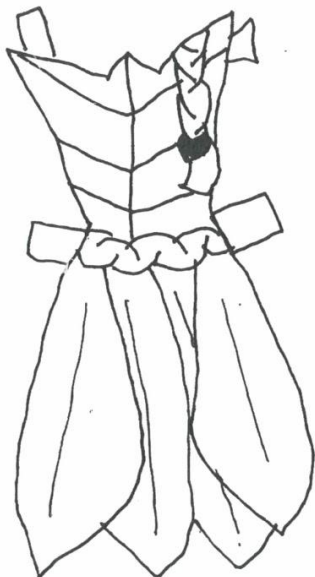
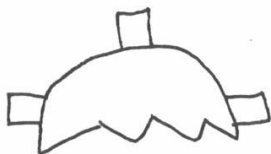


Daphne



Rose







Daisy

